

# Miami Group Sierra Club Memorial Grove



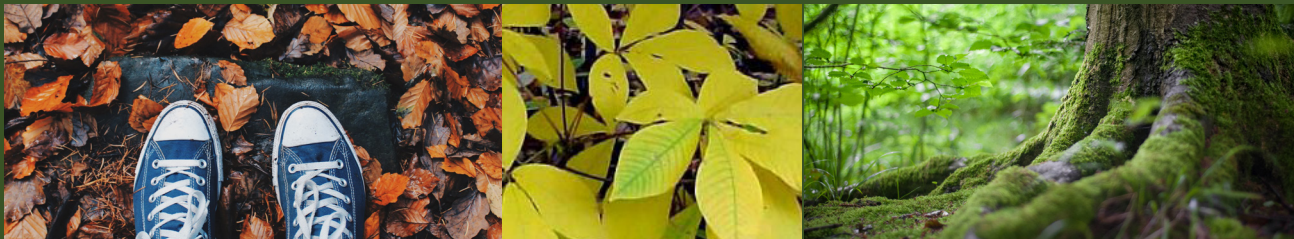
The Miami Group Sierra Club Memorial Grove was established in 2012. It was formed to honor and remember local members or members' immediate family who have passed.

The Memorial Grove is located on approximately an acre of land in French Park, which was made available to the Club by Cincinnati Parks. The Miami Group has enjoyed a rich history with French Park for many decades, including nature hikes, picnics, and volunteer activities such as clean up events and trail restoration.



The first Memorial Grove planting was completed during the fall of 2012 in which six trees, native to this area, were planted.

In the fall of 2017, eleven more native trees were added to the Memorial Grove. A commemorative plaque was hung on the tree specifically selected for each person being remembered. Immediately following the 2017 planting, family and friends gathered at French Park for a memorial service of readings, music and sharing.



Make a gift of a tree or shrub for a member or immediate family member of the Miami Group Sierra Club (MGSC). Planting is only done in the fall. After selecting a tree, you will be contacted as to when the planting and memorial ceremony will be held.

All trees and shrubs on the brochure list are native and locally grown species. They all provide food, shelter, nesting sites for local wildlife or hosting sites for pollinators.

## HOW TO.



Fill out the form on the following page. Tear off and return to:

Miami Group Sierra Club  
Memorial Grove Fund  
address here  
Cincinnati, OH zip

You may also sign up and pay online at [miamigroup.org](http://miamigroup.org) or use PayPal.



Trees purchased for the Grove are 1-2 inch caliper and have excellent root systems for the best possible chance of survival. Any trees that die due to natural conditions during the first year after planting will be replaced one time within the first five years after planting. The location of each tree in the Grove will be based on proper placement for the tree's size and light requirements. We strive to only purchase locally grown specimens.

MGSC memorial plaques match the same format used by the Cincinnati Park Board.

In honor and memory of  
NAME  
Name of tree  
Miami Group Sierra Club  
planted YEAR



MGSC planting group from October 2017

# TREES\*



## SHORT (10-20 foot tall)

**Redbud** - pink-purple spring flowers/  
yellow fall

**Serviceberry** - white spring flowers/red  
& yellow fall

## MEDIUM (20-40 ft tall)

**Blackgum** - shiny dark green leaves/  
scarlet red fall

**American Hornbeam** - green, serrated  
leaves/yellow, orange, red fall

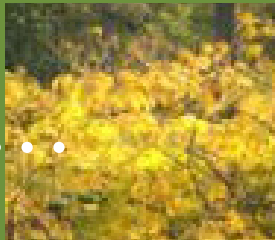
## TALL (40+ ft tall)

**Red Oak** - pointed leaves/red fall

**White Oak** - spreading branches/  
rounded leaves

**Jefferson Elm** - yellow fall

# SHRUBS\*



**Bottlebrush Buckeye** - white flowers

**Pawpaw** - red flowers/edible fruit

**Spicebush** - red berries/yellow fall

**Winterberry** - red berries/yellow fall

\*trees/shrub choices based on availability

Please accept the enclosed gift:

This tree/shrub gift in memory of:

Was this person a MGSC member?

Yes \_\_\_ No \_\_\_

Immediate MGSC family member?

Yes \_\_\_ No \_\_\_

Tree \$600 (purchased by individual or group)

1st choice \_\_\_\_\_

2nd choice \_\_\_\_\_

Shrub \$200 (purchased by individual or group)

1st choice \_\_\_\_\_

2nd choice \_\_\_\_\_

## Donor information:

I would like to be contacted for the  
tree planting event. Yes \_\_\_ No \_\_\_

Name \_\_\_\_\_

Address \_\_\_\_\_

City State Zip \_\_\_\_\_

Cell phone \_\_\_\_\_

## Please make checks payable to:

MGSC Memorial Grove

(Please put name of the person being  
memorialized on memo line of check.)

Visa/Mastercard

Card # \_\_\_\_\_

Exp. Date \_\_\_\_\_

CSD code (3-digit code on back of card) \_\_\_\_\_

Signature \_\_\_\_\_